



Rangatiratanga

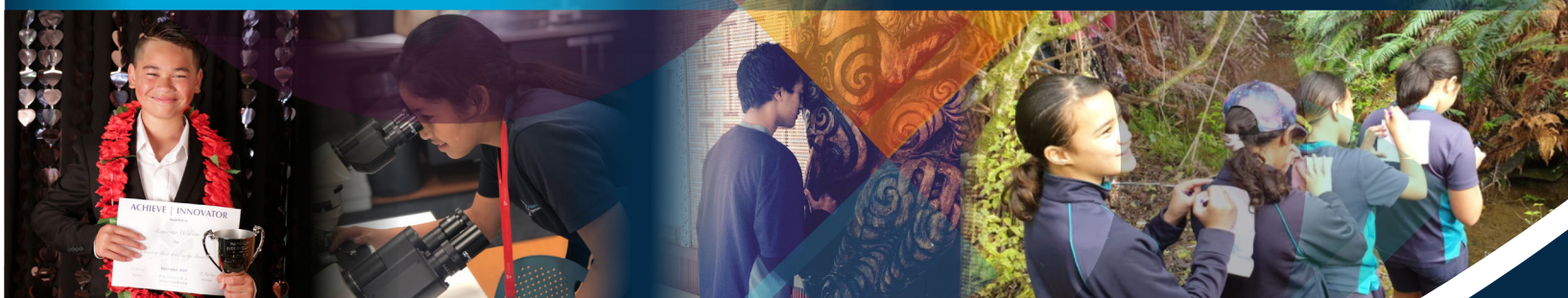
Pride in OURSELVES

Whānaungatanga

Pride in our relationships with OTHERS

Kaitiakitanga

Pride in our ENVIRONMENT



Papakura Intermediate

Home to innovative learners and leaders

TŪ RANGATIRA – BELIEVE STRIVE ACHIEVE!

Our Journey

From past to present

*Hokia nga whakaaro ki onamata, hei whakau onaianei kia anamata.
We should look to the past, so we can understand the present and plan for the future.*

Our school officially opened as the first local intermediate in 1962 with the name Papakura Intermediate and we are proud to boast a long and memorable history that has accumulated an alumni of over 50 years of graduates!

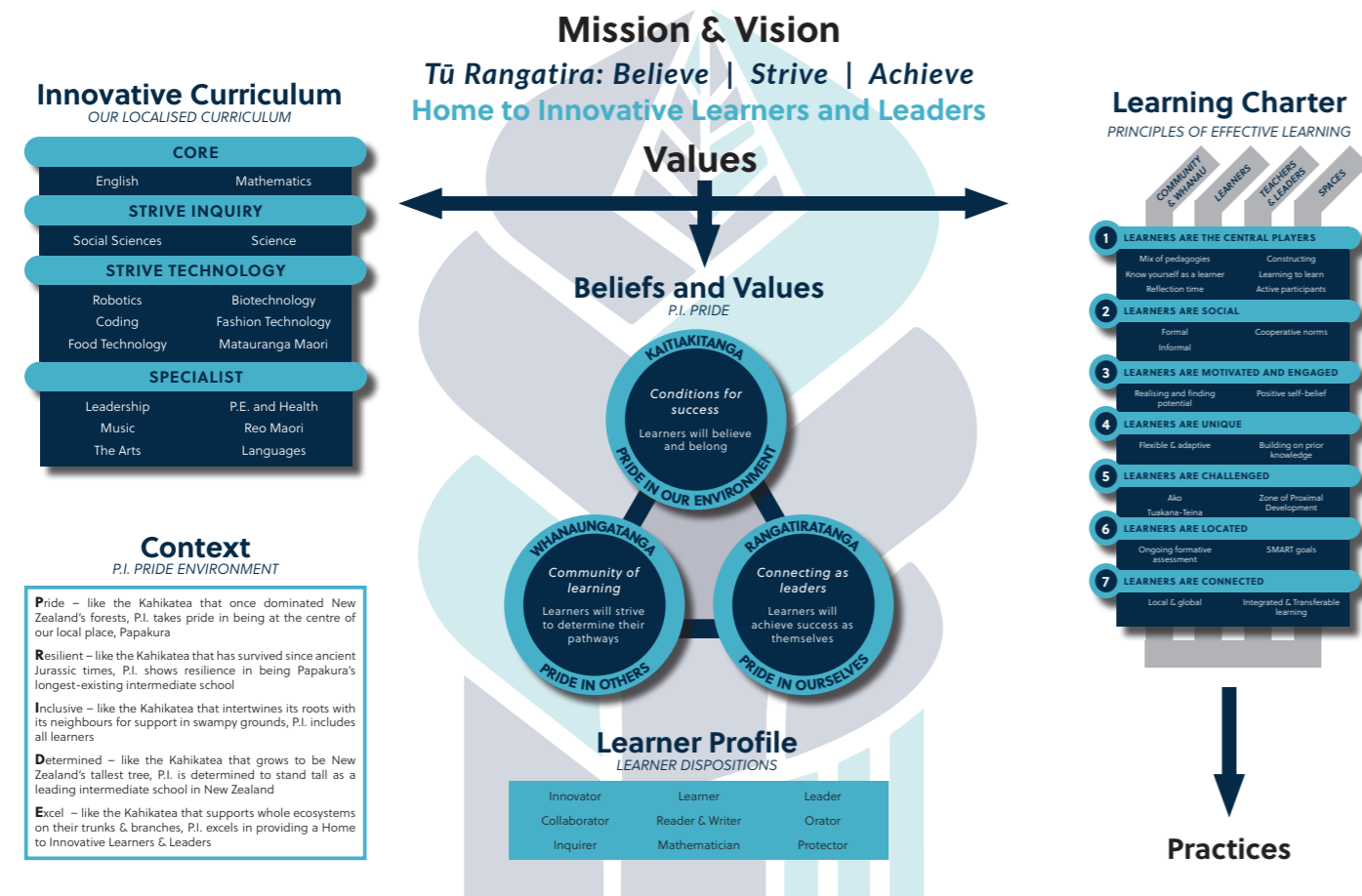
In 2000 our name changed to Mansell Senior School because the Board of Trustees wanted a name that was different from other schools in the area and would reflect the intention of becoming a Senior School.

In 2015 Mansell was on the Move with two years of review and this kick-started our community consultation to find the best name to reflect the school we were evolving into. The community spoke and we listened. In March 2017 we returned to our former name of Papakura Intermediate (P.I.).

Though our school name, culture and curriculum have changed, what has not changed is our strong desire to be a school that produces

students who will live the legacy of Clarrie Mansell's name – to be learners, leaders, and genuinely good citizens for our community and country.

We are proud to have buildings named after great leaders such as Clarrie Mansell, Jerome Kaino, Peter Wadams (P-Money) and Michael Meredith. We are even prouder that our school name now reflects the long and rich history of the area, the families and our school community.



Our School Culture

Now and beyond

Intermediate is a unique time where emerging adolescents take the values and understandings they have developed in the early years of their lives and start to test and apply them in the world. They begin to think critically about a wider range of ideas and issues. They grow in confidence and take on challenges with more responsibility. They basically unleash their immense potential at a rapid rate!

We believe successful intermediate schooling caters to this growth by offering 11 to 13 year olds a wide-ranging curriculum while giving them opportunity to specialize in areas of interest or talent. We take seriously our responsibility to ensure our youth are in a place of "readiness" for all that life has to offer them, both in High School and beyond. We pride ourselves in being able to do this with specialist teachers, in specialist spaces, with specialist resources.

Our school logo is a stylised Kahikatea tree that reflects our P.I. PRIDE school culture.

OUR VALUES

We have built a strong culture based on the ethic of taking pride.

We take pride in ourselves - rangatiratanga.

We take pride in our relationships with others - whanaungatanga.

We take pride in our environment - kaitiakitanga.



OUR MISSION

To develop leaders who will self-determine their future:

Tū Rangatira – believe strive achieve!



OUR VISION

To provide a home to innovative learners and leaders.

Pride – like the Kahikatea that once dominated New Zealand's forests, P.I. takes pride in being at the centre of our local place, Papakura

Resilient – like the Kahikatea that has survived since ancient Jurassic times, P.I. shows resilience in being Papakura's longest-existing intermediate school

Inclusive – like the Kahikatea that intertwines its roots with its neighbours for support in swampy grounds, P.I. includes all learners

Determined – like the Kahikatea that grows to be New Zealand's tallest tree, P.I. is determined to stand tall as a leading intermediate school in New Zealand

Excel – like the Kahikatea that supports whole ecosystems on their trunks & branches, P.I. excels in providing a Home to Innovative Learners & Leaders

OUR CURRICULUM AND LEARNER PROFILE AIMS TO DEVELOP STUDENTS WHO ARE LEARNERS, READERS AND WRITERS, MATHEMATICIANS, INNOVATORS, INQUIRERS, COLLABORATORS, LEADERS, ORATORS AND CONTRIBUTORS.

Papakura Intermediate Home to Learners

PERSONALISED LEARNING

Our curriculum is centred on all learners knowing how they learn best, where they are with their learning, where they need to go and how to get there. Within the first 2 weeks of school at the start of the year, each learner will be able to use assessment information and knowledge about their own learning to be clear about their learning pathway ahead. Learners record and track their learning in individual profiles.

INQUIRY LEARNING

Our curriculum is taught through an inquiry approach, where students ask meaningful questions and learn the skills and dispositions to answer them. The STRIVE inquiry model sets learners up for life as they learn to collaborate, problem solve, think critically, be guided and guide others. Learning areas explicitly taught through inquiry are: social sciences, science and health. This approach encourages learners to examine the complexities of the world and form their own ideas rather than being told the answers.



CORE CURRICULUM LEARNING

We believe every learner needs a strong foundation of literacy and numeracy for life and that every learner should develop a love for language and mathematical reasoning. Our core curriculum teachers strive for excellence in English and Mathematics by accelerating the learning of students who are not on track to meet the National Standards and by extending those who are. We provide study support sessions before and after school to further support our students' learning.

STUDENT SUPPORT

We support our students' varying needs alongside a range of specialists including:

- Special Needs Education Coordinator (SENCO)
- Social Worker in Schools (SWiS)
- ManaKidz nurse and healthcare worker
- Resource Teachers of Learning and Behaviour (RTLb)
- Learning assistants in classes
- Student counselling services
- 1-1 and group mentoring programmes
- Access to a range of Special Education and community services including speech language therapists, psychologists and a visiting dental clinic

It's important to know how I learn best. I use the left side of my brain more, which means I'm a reflective learner. I like thinking first before doing something, listening to someone explaining and seeing examples before giving it a go. In my inquiry I discovered I don't like moving around because it distracts me but I do like quiet spaces when learning.

- Jonathan Marshall
(Tech angel, Enviro champ, member of Math core group)

Papakura Intermediate Home to Innovative Learners

TECHNOLOGY LEARNING

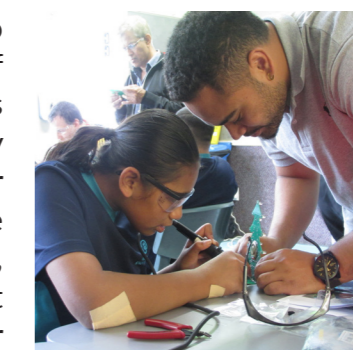
Papakura Intermediate learners are privileged to have first-hand access to what is becoming one of New Zealand's leading technology programmes for Year 7/8 learners. We provide technology learning to our own students as well as 9 other local Papakura schools including Drury, Ardmore and Conifer Grove schools. Unlike primary school, our learners are often able to use our specialist teachers, spaces and resources to enhance their own inquiry projects and learning.

Learning technology in Years 7 and 8 allows our young people to explore future career opportunities in technology, engineering and science-based industries. Our newly developed technology programme has the following features:

- a range of technology learning areas are offered each year and can be chosen based on students' needs and interests each year [see diagram below]
- once students have mastered the specific knowledge and skills in different areas, they can move onto their own inquiries in Year 8, giving them more control over their own learning
- a very unique learning area called 'Matauranga Maori', which incorporates traditional Maori knowledge and worldviews on science and technology with a specific focus, e.g., environmental, astronomical or economical.

| Learning area | Career prospects | Parent preference | Student preference |
|--|---|-------------------|--------------------|
| Digital technology Using computers and devices in different ways; applications and programs; coding; robotics. | Job opportunities Pay \$43,000 - \$130,000 | 70.1% | 40.8% |
| Construction Planning, designing and creating models using a range of materials | Job opportunities Pay \$40,000 - \$120,000 | 63.8% | 52.9% |
| Food technology Creating or improving food and drinks; packaging, storing and manufacturing. | Job opportunities Pay \$50,000 - \$95,000 | 63.5% | 62.3% |
| Electronics Designing the production of electronic equipment like radios, TVs and computers. | Job opportunities Pay \$50,000 - \$120,000 | 61.4% | 50.7% |
| Art and design Creating designs for promotion, layout for fabrics, websites, magazines and publications. | Job opportunities Pay \$35,000 - \$110,000 | 55.1% | 42.2% |
| Biotechnology Using living things to create new animal or plant based products; solving problems. | Job opportunities Pay \$55,000 - \$130,000 | 53.5% | 51.6% |
| Fashion technology Exploring fabrics; designing and creating fashion technology products. | Job opportunities Pay \$31,000 - \$70,000 | 28.3% | 25.6% |

SPECIALISED LEARNING



Alongside their own classmates, learners move into specialised teaching sessions which gives them a chance to comfortably ease into learning with different teachers, following their own timetable and preparing

for a High School structured timetable. They will explore and develop the specific knowledge, skills and dispositions for each of these disciplines:

- Physical education and health
- Sports studies
- Visual art
- Performing arts – music, dance and drama
- Languages – te reo Maori me ona tikanga

INNOVATIVE LEARNING

Teaching and learning is aided by a range of devices throughout the school including Chromebooks and iMacs. Our school is laid out as innovative learning zones that students move between and learn in, depending on their focus and need. There is a library and performance space, 6 fit-for-purpose technology zones, 4 collaborative zones in the Kaino building and 4 single cell zones in the Mansel building. The Mansel building will be upgraded at the end of 2020 as part of our plan to provide a home to innovative learners and leaders.

You really are doing some cutting edge things here!

Mary Anne Mills
Core Education
Member of New Zealand Curriculum Design Team
Peer reviewer of P.I. technology programme

Papakura Intermediate Home to Leaders

To me being a rangatira means being a good leader. It means inspiring people and showing people a good path so they can carry on to be a good leader.

Tamihana Kahika

(School councillor, Sports coach, member of Kapa haka, Pasifika, Indian and Maori core group.)

LEADERSHIP CURRICULUM

During our in-depth community consultation in 2016, 82.9% of surveyed parents believe it is 'very important' for intermediate schools to give opportunities for learners to develop into great leaders – we agree! Based on the belief that any person can be a leader in life regardless of what you 'do', learners will develop leadership dispositions through project based learning in the community.



LEADERSHIP RESPONSIBILITIES AND TRAINING

- David Tua leaders – weekly values-based boxing sessions
- School councillors - National Young Leaders day and weekly coaching
- Tech angels – Kiwibots Pebbles Workshop Robotics Series
- Sport coaches – Counties Manukau workshops
- Music scholars – Papakura Music School pay annual tuition for Saturday classes
- Mediators – Cool School's training and weekly coaching
- Kaitiaki champs – Enviroschools trips and weekly coaching
- Rock n Water leaders – term-by-term programme
- Class based responsibilities – librarians, office monitors and equipment managers
- Head Boy & Girl - elected by school community mid-year



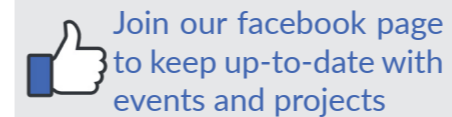
LEADERSHIP AND EXTENSION OPPORTUNITIES

- Gifted and Talented - focused on extending learning to high school levels
- MATES mentoring – Great Potentials provide 1-1 Auckland University mentors
- Study support centre in mornings and afternoons
- Core groups in specific areas such as PE, Maori and Maths
- Kapa haka – perform at local and regional events
- Pasifika group – perform at local and regional events
- Hip hop group – perform at local and regional events
- Choir – perform at local and regional events
- Art club – creating art for home, school and competitions
- Oral language focus – training for Papakura Rehu Tai Festival
- New Foundations mentoring and transition programmes

Home-School Partnership

COMMUNICATION

- The office is open 8:00am – 4:00pm
- The classrooms are open 8:30am – 3:15pm but sign in at the office first
- If your child is late then please telephone the office or send a note. If your child is absent for more than two days, the Attendance Officer will be notified.
- We treat minor injuries at school but will always contact you if possible. In case of emergency, your child will be taken straight to hospital. If your child has an allergy or requires medication, please let us know by filling out the Enrolment Form thoroughly.



SHARING LEARNING

- A progress report is given during student-led conferences at the end of Term 2
- An achievement report is sent home at the end of Term 4
- Expect a newsletter 3 times a term, generally 3 weeks apart
- We launch every inquiry the first week of each term which is a chance for whanau to explore the new focus alongside our learners in a fun way
- We showcase our inquiry learning in the last two weeks of every term and it's vital you attend these to see your child's learning
- The first day of school starts with a short powhiri for all new whanau

ENGAGEMENT

We love having parents, caregivers, kaumatua, kuia and wider family involved in student learning and school life. We offer these opportunities:

- assisting teachers in classrooms and on trips
- preparing equipment and events
- sports coaching
- sharing a particular skill/interest, e.g., culture, arts.

LIVING OUR VALUES

Please support your child to be their best selves by meeting our school expectations. We are a **water only school** which means for 6 hours of the day, our learners do not drink fizzy drinks, sugar drinks or anything but water. We are a **healthy eating school**.

KA ORA, KA AKO LUNCH PROGRAMME

As part of the Ka ora, Ka Ako lunch programme every student receives a nutritious lunch every day for free. Our lunches are made onsite in our commercial kitchen by the Painga Project.

10 DAY SAMPLE MENU

| | | |
|--|--|---|
| MONDAY <i>Roll or Sandwich</i> | Chicken, brie and cranberry salad roll | Roast beef, chow chow salad roll |
| TUESDAY <i>Hot Kai</i> | Butter Bean Chicken | Cheesy potato and kumara bake (vege for all) |
| WEDNESDAY <i>With your hands</i> | Black Bean, Beef and Corn Nachos | BLAT wrap |
| THURSDAY <i>Rice Day</i> | Teriyaki chicken & vege on rice | Sushi log or ball |
| FRIDAY <i>Finally Friday</i> | PI Burger | Spinach, Chickpea, Kumara and Feta Sausage Roll |

SHARING THE LOAD

We work hard to minimise costs for families and while there are no school fees, there is a fee for our specialist technology programmes, which is a low \$65 per student a year. This helps cover the extra costs of materials and food used in technology. A letter for WINZ can be requested from the school office if needed. There will also be a small contribution towards your child's school camp which is an integral part of the curriculum.

Facts for the Fridge

SCHOOL HOURS

Our day is arranged into 100 minute learning blocks so in-depth and un-interrupted learning can occur and learning minutes can be used wisely.

| | |
|-------|--|
| 8:00 | Office, breakfast club and study support open |
| 8:30 | Classrooms open and teachers are available |
| 8:50 | Learning block 1 |
| 10:30 | Morning tea |
| 11:00 | Learning block 2 |
| 12:40 | Lunch |
| 1:20 | Learning block 3 |
| 3:00 | End of school learning and study support opens |



2022 TERM DATES

| | |
|--------|--|
| Term 1 | Tuesday 1 February - Thursday 14 April (11 weeks) |
| Term 2 | Monday 2 May - Friday 8 July (10 weeks) |
| Term 3 | Monday 25 July - Friday 30 September (10 weeks) |
| Term 4 | Monday 17 October - Wednesday 14 December (9 weeks) |

SCHOOL UNIFORM

We take pride in our presentation so learners are expected to wear the correct and full uniform on the way to school, at school and on the way home from school. The polo shirts are “quick dry” which means that when students have sports or hot weather, it can be washed and dried easily overnight. Shoes are to be plain black. Closed shoes are compulsory for technology. Uniform can be purchased from SAS Sports, 28 Wood St, Papakura. Their phone number is 09 299-8412.



PAPAKURA INTERMEDIATE

50 Settlement Road, Papakura 2110
PO Box 202018, Southgate, Takanini 2245
Phone: (09) 298-8737

Email: office@papakuraintermmediate.school.nz

Website: www.papakuraintermmediate.school.nz

Like our facebook page: Papakura Intermediate - Mansell